

/ 2 /

” ’  
,  
,  
”

62788.24.114 " , ,

. 26-00-1727/13 29.11.2017 .

.  
" " , 202647586  
" 11, .1, .16  
: " 11, .1, .16  
, (e-mail): 0896791133, investagro@abv.bg  
:  
.:0877986699

I. :

1.  
) , , , , , , , ,  
;

, , , , , , , ,  
62788.24.114

•

- 
- 
- 
- 
- 
- 
- 
- 

3000 . . .

600 . . .

600 . . .

270 . . .

200 . . .

48<sup>3</sup>

62788.24.105 62788.24.113.

25-30<sup>3</sup>

80 %

48<sup>3</sup>,

3 4 4.

1 /

.40 ( ) 1272/2008  
(CLP),  
(ECHA)  
980

W, 2400 kg/h

120 kg/h,

1 ( ) 1907/2006  
(REACH). ECHA .6

.7, „”  
.93, .1, .1 .2 , 26-00-1727/13<sup>2</sup>  
29.11.2017 .

) / ;

)

, , ;

, , : ;

); ; ( ; -

; ; .

, - .

, - .

- . 25-30<sup>3</sup>

, - .

- 80% 48<sup>3</sup>, 3 4 4.

. . .

, 5 . ,

) ; - , ,

, . ,

➤ 20 03 01 - " : " - 3-5

➤ 17 04 05 - ,, " - ,  
- 120 ,

, , ,  
( , , , , , )  
, , , -

, , ,  
( ) , , ,  
, , ,

- 02 05 01 ,
- 02 05 99 ,

, ( , )  
, , ,  
, , :

- 
- -20 / ( )
  - -20 / ( )
  - -30 / ( )
  - -5 / ( )

;

5<sup>3</sup>

( )

)

( ), ...

)

;

/

)

§ 1, .12

, - ,  
 , .  
 .  
 .  
 , ,  
 .  
 - , , ,  
 . ,  
 , .  
 " " :  
 , - - ;  
 , - ;  
 - 45,059 -  
 , .  
 , ;  
 , ; -  
 . ;  
 - , ;  
 - ;  
 ; -  
 - 45,059 -,  
 , -  
 ;  
 - ;  
 - .

2.

62788.24.114

“ 45059 ”

3.

2400 kg/h

980 W,

120 kg/h,

5

1 /

.40

( ) 1272/2008 (CLP), (ECHA)

1 ( ) 1907/2006 ECHA . 6  
(REACH).

4.

5.

6.

7.

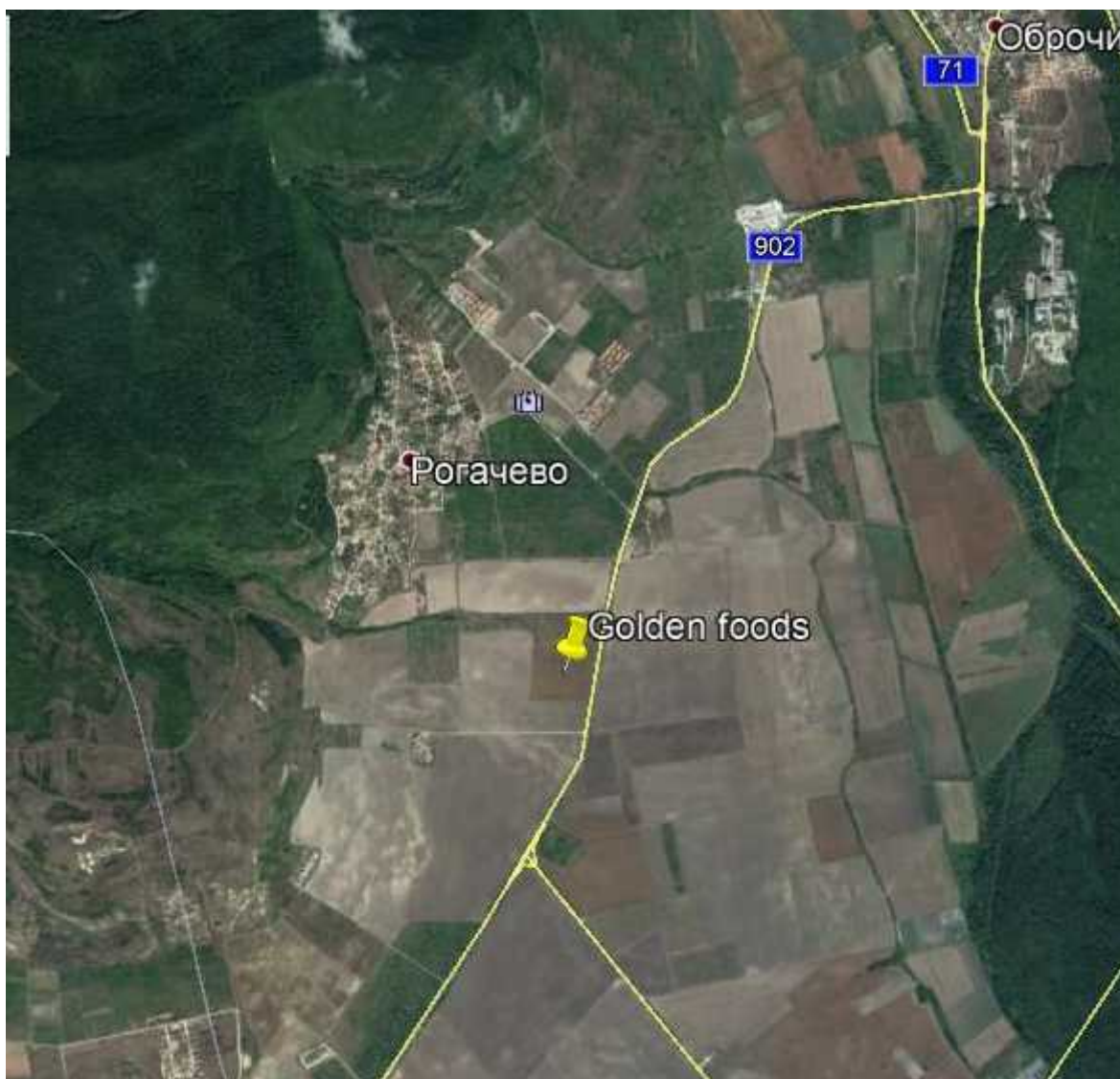
( ),  
58,7 %).

- 73,6 % (



8.

700 .



9.

( 15%).

339 m<sup>2</sup>

39 m.

8 m  
4 m

0,5 1 m.

”

“

,

.

-

,

.

.

( ): ;

;

(

);

:

;

,

:

0 =30-450 /.

/

”

”

”

”

”

10.

, . . .

,

,

,

-

-

,

;

.

:

•

-

-

;

•

;

•

,

,

91/676/

91/271/

,

.

-

.

.

,

,

,

.

"

"

BG 0002082

2000

"

"

BG 0002082

.

.

,

,

,

.

,

.

**11.**

,

(

,

,

,

).

,

,

.

,

,

.

**12.**

,

.

.

,

.

.

.

.

.

.

:

- :
- 1) 2001 .. , .54 16 2010 .); ( . , .1 2
  - 2) 2003 .. , .63 13 2010 .); ( . , .86 30
  - 3) 2002 .. , .61 6 2010 .); ( . , .91 25
  - 4) .124 23 1997 .. , .12 12 2010 .); ( . ,
  - 5) 1999 .. , .82 16 2009 .). ( . , .84 24

- :
- 1) 9 16.03.2001 .
  - ( . , .30 28.03.2001 .);

### III.

1. ;  
"
2. , , ;  
2 .
3. ;  
4
4. ;  
18,5 .  
150 .  
5 . - 296 502

. . . -  
 . . . -  
 . . . 700  
 . . . " . . . " . . .  
 . . . " " . . . " . . .  
 . . . - . . .  
 . . . - 9.5 %.  
 30 % . . . -  
 ( . . . ) . . .  
 . . . 19% . . . -  
 . . . 3,8 . . .

**5.**

;  
 :  
 - " " . . .  
 - " " ; ;  
 - " " ; ;  
 - " " ; ;  
 . . . 163,4 . . . " " 204,7 .  
 . . . 1961 . . .  
 . . . - 16  
 . . . 7  
 . . . 116  
 , 140 , , 44  
 , " - (26,2 )  
 . . . 1320,7 . . .  
 1943 . . .  
 - " , " 3 620,0  
 - " " . . .  
 . . . 46,3 . . .  
 . . . 2000. :  
 - " (BG 0002061);  
 - " (BG 0000118);  
 - " (BG 0002097);  
 - " (BG 0000102);  
 - " (BG 0000573);  
 - " (BG 0000130).  
 - " (BG 0002082);

6.

;

“ ” BG 0002082

„ ”, BG 0002082

2000

BG0000102

F

BG0000118

F

BG0000107

J

E 27 21'33 "

N 43 21'11 "

( )

( )

381,328.30

( )

0

357

226

*NUTS*

/

%

0

,

NUTS

1

BG03

BG032

32

BG03

BG031

67

:

100

,

I .79/409/EEC

II



92/43/EEC

	I	.79/409/EEC					
( )							
( )							
A403 <i>Buteo rufinus</i>	1p	114i	A	A	C	A	
A073 <i>Milvus migrans</i>	1p	148i	A	A	C	A	
A074 <i>Milvus milvus</i>		17i	A	A	C	A	
A078 <i>Gyps fulvus</i>		6i	A	A	B	A	
A094 <i>Pandion haliaetus</i>		43i	A	A	C	A	
O							
A080 <i>Circaetus gallicus</i>	2p	130i	A	A	C	A	
A092 <i>Hieraaetus pennatus</i>	1-3p	64i	A	A	C	A	
A082 <i>Circus cyaneus</i>		48i	A	A	C	A	
A083 <i>Circus macrourus</i>		46i	A	A	C	A	
A404 <i>Aquila heliaca</i>		3i	A	A	C	A	
K ( )							
A402 <i>Accipiter brevipes</i>	1p	165i	A	A	C	A	
A089 <i>Aquila pomarina</i>	2-6p	3716i	A	A	C	A	
A072 <i>Pernis apivorus</i>	2-3p	2616i	B	A	C	A	
A029 <i>Ardea purpurea</i>	li		D				
A091 <i>Aquila chrysaetos</i>		5i	C	A	C	A	
A084 <i>Circus pygargus</i>		414i	A	A	C	A	
A027 <i>Egretta alba</i>	1-15i		B	B	C	B	
A095 <i>Falco naumanni</i>		1i	A	A	B	A	

A081 <i>Circus aeruginosus</i>	1p	1695i	A	A	C	A
A002 <i>Gavia arctica</i>		5i	B	A	C	B
A393 <i>Phalacrocorax pygmeus</i> M		5i	D			
A019 <i>Pelecanus onocrotalus</i>		22428iA	A	A	C	A
A020 <i>Pelecanus crispus</i>		15-19i	C	A	B	A
A031 <i>Ciconia ciconia</i>	7p	171461i	A	A	A	C A
A026 <i>Egretta garzetta</i>		6i	D			
A068 <i>Mergus albellus</i>		9i	B	A	C	B
A030 <i>Ciconia nigra</i>	1p	2163i	A	A	C	A
A032 <i>Plegadis falcinellus</i>		62i	B	A	C	B
A034 <i>Platalea leucorodia</i>		3i	D			
A038 <i>Cygnus cygnus</i>		7-8i	C	B	C	C
A396 <i>Branta ruficollis</i>		0-3i	D			
A397 <i>Tadorna ferruginea</i> a		3i	D			
A023 <i>Nycticorax nycticorax</i>		4i	C	B	C	C
A246 <i>Lullula arborea</i>	150-300p	P	C	A	C	C
A215 <i>Bubo bubo</i>	3p		C	A	C	C
A224 <i>Caprimulgus europaeus</i>	18-107p		C	A	C	C
A229 <i>Alcedo atthis</i>	3-15p		C	A	C	C
A231 <i>Coracias garrulus</i>	2-18p		C	A	C	C
A234 <i>Picus canus</i>	15-23p		C	A	C	B

A236 <i>Dryocopus martius</i>	5-9p		C	B	C	C
A429 <i>Dendrocopos syriacus</i>	85-130p		C	A	C	C
A176 <i>Larus melanocephalus</i>		4i	D			
A243 <i>Calandrella brachydactyla</i>	5-50p		C	A	C	B
A238 <i>Dendrocopos medius</i>	200-400p		B	A	C	A
A255 <i>Anthus campestris</i>	3-25p	66i	D			
A533 <i>Oenanthe pleschanka</i>	11p		B	A	B	A
A439 <i>Hippolais olivetorum</i>	8p		C	B	C	C
A307 <i>Sylvia nisoria</i>	10-26p		C	B	C	C
A442 <i>Ficedula semitorquata</i>	60-150p		B	A	C	A
A338 <i>Lanius collurio</i>	650-1720p		C	A	C	B
A339 <i>Lanius minor</i>	30-70p		C	A	C	A
A379 <i>Emberiza hortulana</i>	50-320p		C		C	C
A239 <i>Dendrocopos leucotos</i>	1-5p		C	B	C	C
A103 <i>Falco peregrinus</i>		18i	A	A	C	A
A133 <i>Burhinus oedicephalus</i>	1-5p		C	B	C	B
A127 <i>Grus grus</i>		103i	A	A	C	A
A122 <i>Crex crex</i>	3-5p		C	B	C	C
A511 <i>Falco cherrug</i>		9i	A	A	C	A
A242 <i>Melanocorypha calandra</i>	5p	125i	C	B	C	C
A097 <i>Falco vespertinus</i>	3p	300i	A	A	C	A

79/409/EEC

A041	<i>Anser albifrons</i>		1-9050i	B	B	C	B
A059	<i>Aythya ferina</i>		5-300i	C	A	C	C
A459	<i>Larus cachinnans</i>	11-17p	10-454i	1495i	B	A	C A
A086	<i>Accipiter nisus</i>	5p	722i	A	A	C	A
A067	<i>Bucephala clangula</i>		0-4i	C	A	C	C
A087	<i>Buteo buteo</i>	6p	P	19712iA	A	C	A
A053	<i>Anas platyrhynchos</i>	1-5p	1-431i	C	A	C	B
A182	<i>Larus canus</i>		9-800i	B	A	C	A
A054	<i>Anas acuta</i>		5i	C	B	C	C
A052	<i>Anas crecca</i>		0-4i	D			
A028	<i>Ardea cinerea</i>		221i	B	B	C	B
A017	<i>Phalacrocorax carbo</i>		1-77i	1026i	C	B	C C
A096	<i>Falco tinnunculus</i>	12p	192i	A	A	C	A
A008	<i>Podiceps nigricollis</i>		1-20i	C	A	C	C
A005	<i>Podiceps cristatus</i>		1-26i	C	A	C	C
A099	<i>Falco subbuteo</i>	5p	293i	A	A	C	A
A050	<i>Anas penelope</i>		0-2i	D			
A125	<i>Fulica atra</i>		0-400i	C	A	C	C

<i>A069 Mergus serrator</i>		1-15i	C	A	C	C
<i>A043 Anser anser</i>		0-17i	B	B	C	B
<i>A179 Larus ridibundus</i>		1-5i	D			
<i>A165 Tringa ochropus</i>		7-11i	D			
<i>A123 Gallinula chloropus</i>	5-50p		D			
<i>A085 Accipiter gentilis</i>	3p	384i	A	A	C	A
<i>A061 Aythya fuligula</i>		5-606i	B	B	C	B
<i>A136 Charadrius dubius</i>	8p		D			

, II 92/43/EEC

, II 92/43/EEC

, II 92/43/EEC

, II 92/43/EEC

, II 92/43/EEC

· - ; B - ; M - ; A - ; R - ; F - ; I -  
; P - .

- - ,  
3.2.  
-

: A) ; B) ; C) ); D)

( )  
( )

- B Alauda arvensis 2100p C
- B Athene noctua 35p C
- B Carduelis cannabina 115p C
- B Carduelis chloris 630p C
- B Corvus monedula 890p D
- B Coturnix coturnix 165p C
- B Emberiza cirrus 100p C
- B Emberiza melanocephala 100p C
- B Erithacus rubecula 2035 C
- B Fringilla coelebs 2650 C
- B Fringilla montifringilla 63i C
- B Galerida cristata 160p C
- B Hirundo rustica 780i C
- B Jynx torquilla 18p C
- B Luscinia megarhynchos 790p C
- B Miliaria calandra 2450p C
- B Oenanthe hispanica 6p C
- B Otus scops 46p C
- B Parus caeruleus 310p C
- B Parus lugubris 21p C
- B Picus viridis 115p C
- B Saxicola torquata 15p C
- B Streptopelia turtur 225p C
- B Sylvia atricapilla 2180p C
- B Turdus merula 1750p C
- B Turdus philomelos 860p C

%

, 1  
, 0  
( , ) 0

0 , , ,

38 ( . )

0 ( )

- ) , ( . , , 3

6 ( , , , , , , )

4  
5  
0  
)  
6  
35  
1  
1  
)  
0  
)  
100

06/2005,

/Quercus cerris/

/Q. frainetto/

/Carpinus betulus/

campestr /

/Ulmus minor/

/Alnus glutinosa/

/Quercus pedunculiflora/

/Crataegus monogyna/

/Cornus mas/

/Cornus sanguinea/

( , 1991).

/Clematis vitalba/

/Smilax exelsa/

/Fraxinus oxycarpa/

/Acer

/Periploca graeca/

184

50

(1985).

80

(SPEC) (BirdLife International, 2004).

SPEC1

7

SPEC2 - 24

SPEC3 - 49

70

2

62

79/409

Via Pontic

30

. 11%

150

35%

160 500

/Pelecanus onocrotalus/

/Grus grus/

/Larus canus/

/Anser albifrons/



,

-

/Dendrocopos medius/

/Ficedula semitorquata/

/Picus viridis/, /Miliaria calandra/, /Oenathe  
pleschanka/, /Calandrella brachydactyla/,  
/Hippolais olivetorum/, /Sylvia nisoria/,  
/Emberiza hortulana/ .

“ ”

“ ”

“ ”

4%

– “ ”,

1962 .

“ ”,

1943 .

1998 .

2005

BirdLife International

%

0.00

- 1.00
- 3.00
- 0.00

( ) :=

; +

2000

; -  
2000

; \*

( )

; /

% -

2000

%

F00008500

- 16.00

( ) :=

; +

2000

; -  
2000

; \*

; /

% -

2000

	:						%
100				B	-		33
102	/			A	-		36
110				B	-		33
120				B	-		33
130				B	0		40
140				B	+		15
150				A	-		15
151				B	-		10
161				B	+		5
164				A	-		34
165				B	-		34
166				B	-		34
170				C	-		20
171				C	-		1
180				C	-		30
200				C	-		1
211				C	-		1
220				C	-		1
230				A	-		80
243		,	,	A	-		30
300				A	-		2
301				A	-		10
302				A	-		2
330				A	-		1
400		,		C	-		4
401				A	-		5
420				A	-		1
421				A	-		2
423				A	-		1
424				A	-		1
501	,	,		C	-		2
502	,			B	-		3
505				A	-		4
507	,			C	-		1
513				A	-		30

600		B	-	4	
601		C	-	1	
603		C	0	0	
604	,	B	0	30	
608		B	-	1	
620		B	-	1	
621		C	-	4	
622	,	C		0	4
623		B	-	15	
625	,	C	-	4	
701		A	-	2	
702		C	-	2	
703		B	-	2	
709		B	-	1	
800	,	B	-	1	
840		B	+	5	
860	,	A	-	1	
990		A	-	5	
409		B	-	1	
422		B	-	1	
605		B	0	0	
852		C		-	5

:

100		A	-		
110		B	-		
120		B	-		
130		C	-		
140		C	-		
150		B	-		
151		C	0		
164		A	-		
165		B	-		
166		B	-		
170		B	0		
171		B	0		
180		B	0		
200		C	0		
211		C	0		
220		C	0		

230				B	-
243		,	,	B	-
300				B	-
301				B	-
302				A	-
330				A	-
400			,	A	-
401				A	-
420				A	-
421				A	-
423				B	-
424				A	-
501	,		,	C	0
502	,			A	0
504				B	-
505				B	-
507	,			C	0
513				B	-
600				C	-
601				C	0
603				A	0
604	,			A	0
608				C	-
620				B	-
621				C	-
622			,	B	0
623				C	-
625		,	,	C	-
701				A	-
702				B	-
703				A	-
709				B	-
710				B	0
860			,	A	-
410				B	-
419			/	B	-
422				B	-
605				A	0
852				C	-

: - ; B - ; C -

:- + ; - ; 0 - 2000

) :

- 
- 
- 

) „ ”,  
**BG0002082,** :

**2.1. .6, .1, .3 :**

*Gavia arctica* (*Gavia arctica*), *Pelecanus onocrotalus* (*Pelecanus onocrotalus*), *Pelecanus crispus* (*Pelecanus crispus*), *Phalacrocorax pygmeus* (*Phalacrocorax pygmeus*), *Nycticorax nycticorax* (*Nycticorax nycticorax*), *Egretta garzetta* (*Egretta garzetta*), *Egretta alba* (*Egretta alba*), *Ardea purpurea* (*Ardea purpurea*), *Ciconia nigra* (*Ciconia nigra*), *Ciconia ciconia* (*Ciconia ciconia*), *Plegadis falcinellus* (*Plegadis falcinellus*), *Platalea leucorodia* (*Platalea leucorodia*), *Cygnus cygnus* (*Cygnus cygnus*), *Mergus albellus* (*Mergus albellus*), *Branta ruficollis* (*Branta ruficollis*), *Tadorna ferruginea* (*Tadorna ferruginea*), *Pandion haliaetus* (*Pandion haliaetus*), *Pernis apivorus* (*Pernis apivorus*), *Milvus migrans* (*Milvus migrans*), *Milvus milvus* (*Milvus milvus*), *Gyps fulvus* (*Gyps fulvus*), *Circus gallicus* (*Circus gallicus*), *Circus aeruginosus* (*Circus aeruginosus*), *Circus cyaneus* (*Circus cyaneus*), *Circus macrourus* (*Circus macrourus*), *Circus pygargus* (*Circus pygargus*), *Aquila pomarina* (*Aquila pomarina*), *Aquila chrysaetos* (*Aquila chrysaetos*), *Hieraetus pennatus* (*Hieraetus pennatus*), *Accipiter brevipes* (*Accipiter brevipes*), *Buteo rufinus* (*Buteo rufinus*), *Aquila heliaca* (*Aquila heliaca*), *Falco naumanni* (*Falco naumanni*), *Falco vespertinus* (*Falco vespertinus*), *Falco peregrinus* (*Falco peregrinus*), *Falco cherrug* (*Falco cherrug*), *Grus grus* (*Grus grus*), *Crex crex* (*Crex crex*), *Burhinus oedicephalus* (*Burhinus oedicephalus*), *Larus melanocephalus* (*Larus melanocephalus*)

melanocephalus),

Bubo bubo (Bubo bubo), Caprimulgus europaeus (Caprimulgus europaeus), Alcedo atthis (Alcedo atthis),

Coracias garrulus (Coracias garrulus), Picus canus (Picus canus), Dryocopus martius (Dryocopus martius),

Dendrocopos medius (Dendrocopos medius), Dendrocopos leucotos (Dendrocopos leucotos), Dendrocopos

syriacus (Dendrocopos syriacus), Melanocorypha calandra (Melanocorypha calandra), Calandrella

brachydactyla (Calandrella brachydactyla), Lullula arborea (Lullula arborea), Anthus campestris (Anthus

campestris), Lanius collurio (Lanius collurio), Lanius minor (Lanius minor), Oenanthe pleschanka

(Oenanthe pleschanka), Sylvia nisoria (Sylvia nisoria), Hippolais olivetorum (Hippolais olivetorum),

Ficedula parva (Ficedula parva), Ficedula semitorquata (Ficedula semitorquata), Emberiza hortulana

## 2.2. .6, .1, .4 :

Podiceps cristatus (Podiceps cristatus), Podiceps nigricollis (Podiceps nigricollis), Phalacrocorax carbo

(Phalacrocorax carbo), Ardea cinerea (Ardea cinerea), Anser albifrons (Anser albifrons), Anser anser

(Anser anser), Anas penelope (Anas penelope), Anas crecca (Anas crecca), Anas platyrhynchos (Anas 2

platyrhynchos), Anas acuta (Anas acuta), Aythya ferina (Aythya ferina), Aythya fuligula (Aythya fuligula),

Bucephala clangula (Bucephala clangula), Mergus serrator (Mergus serrator), Accipiter gentilis (Accipiter

gentilis), Accipiter nisus (Accipiter nisus), Buteo buteo (Buteo buteo), Falco tinnunculus (Falco

tinnunculus), Falco subbuteo (Falco subbuteo), Gallinula chloropus (Gallinula chloropus), Fulica atra

(Fulica atra), Charadrius dubius (Charadrius dubius), Tringa ochropus (Tringa ochropus), Larus ridibundus

(Larus ridibundus), Larus canus (Larus canus), Larus cachinnans (Larus cachinnans), Merops apiaster

(Merops apiaster), Riparia riparia (Riparia riparia).

„ " BG 00020882 ,

7.

1. ;  
,  
.  
,  
-  
,  
-  
,  
:  
;  
,  
;  
;  
-  
/  
;  
/  
(  
(  
);  
)  
-  
.  
.  
:  
,  
,  
,  
.  
,  
,  
,  
,  
,  
.  
-  
,  
-  
.  
.  
.  
-  
.



/ , / , , - , , , , , . , . , - , , , , . / , , - , , , . , . , , ( , ) , , , . , - , , . - , - , , - , . , , ( ' 300 ) ( ) , : ( ) , , - . , : , - , ( 15 ) ; - 109 . + 16 . + , , : , , , .

“ ”  
( )  
3000  
“ ”  
2007  
(36 )  
( )  
(2 ) (6 )  
(1 ) (15 )  
(9 ) (3 )  
(3 ) (2 )  
( ) ( )  
(1972 )  
( 1976 );

- 1.5 ( 1967 .);  
- 5.5. ( 1967 .);  
- 1 ( 1967 .);  
- ( 1967 .);  
- (2 .) (6 .).

8.

IV.

1.

700 .



1994 .

2

700 . , 25 . 4 . 28

1942 .

60- 70- .

300 .  
200. 20 .

— .

-

-

-07-2 16 2009 .

. . .102 2009 .

0,8° .

11,8° . - 22,3° .

19,2° .

6,7 / .

15,3%.

1 /

( 40%).

23% 18,4%, -

- 4,4%.

(424 ), -

, 26%

15-17 ( , - 23%.

0,5 ),

-

(85%),

30% , - 70%.

78%.

-

0,8° .

11,8° . - 22,3° .

19,2° .

(424 ), -

, 26%

15-17 ( , - 23%.

0,5 ),

-

(85%),

30% , - 70%.

78%.

6,7 / .

15,3%.

1 /

( 40%).

23% 18,4%, -

- 4,4%.

---

, .  
 , .  
 , .  
 , .  
 , .  
 , .  
 , .  
 , .

, .  
 ( 15%).  
 , .  
 , .  
 , .  
 , .  
 , .  
 , .  
 , .  
 , .  
 , .

( );  
 ;  
 ( );  
 :  
 ;  
 .  
 ,  
 ,  
 ,  
 ,  
 ,  
 /

0 =30-450 /.

80-

90-

(

3

1

9

339 m2

39 m.

8 m  
4 m

0,5 1 m.

” “.

• :

• ),

• ( - ).

•

• “ ”,

( ).

### 1.1.1.

60 cm.

70 cm.

80 cm.

45-50 cm.

20-40 cm.

**1.1.2.**

~15%.

**1.1.3.**

**1.1.4.**

-9,





( )  
)

(

Angelova (2002).  
0.15 m/a.

1000 m<sup>2</sup>/a.

*Zostera barbata* *Cystozeria barbata*

---

: 1.

( ). 2. ( ),  
 - a ,  
 , /  
 , /  
 : , ,  
 .  
 .  
 - :  
 , , ;  
 - : ,  
 ; ( -  
 , )  
 ( , , )  
 , )  
 .)

85-90 % 49554 , 4.5%  
 - 32.4% -  
 - 15 % ( , , ),  
 17 %, - 7.3 %,  
 , ,  
 - 0.5 %.

·  
 - /Amphibia/  
 - /Caudata/, /Salamandridae/:  
 - /Triturus Vulgaris/; /T. Cristatus/;  
 - /Ecaudata/, /Dicoglossidae/:  
 - /Pelobatidae/ - /Pelobates fuscus/;  
 /Bufonidae/, - Bufo ssp.  
 ·  
 /Reptilia/

-                -                        /Squamanta/:                        /Suaria/ -                        /Ancuidae/;  
               /Lacertidae/-                        /Lacerta agilis/,                        /L. trilineata/,  
               /L. viridis/;                        /Scincidae/ -                        /Untergattung Serpentes/;  
               /Colubridae/                        -                        /Vipera ammodytes/.  
 Coluber ssp.;                        /Viperidae/,                        -  
               .                        /Aves/

-                        /Streptopelia ssp./,                        ,  
               ,                        /Oenanthe oenanthe/,                        /Passer domesticus/  
 /Passer montanus/,                        / (Coloeus monedula)                        /Delichon urbica/,  
               /Delichon urbica/,                        /Pica pica/,                        /Corvus cornix/,  
 (Corvus flagilegus)                        (Garilus grandarius),                        /Parus major/,                        /Corvus  
 monedula/,                        ,                        /Sylvia articapilla/ ,                        /Larus  
 argentatus/ .

**IV.                        /Mammalia/**

-                        /Apodemus ssp./,                        /Rattus ssp./,  
 /Erinaceus concolor/,                        /Talpa europea/,                        /Sciurus vulgaris/,                        /Citelus  
 citelus/,                        /Glis glis/,                        (Lepus europaeus),                        ,                        .

**/Amphibia/**

-                        -                        /Ecaudata/,                        /Hylidae/ -  
               /Hyla arborea/                        /Ranidae/,

**/Reptilia/**

-                        -                        :                        .  
               /Squamanta/:                        /Lacertidae/-                        /Lacerta taurica/,  
               ,                        /Podarcis muralis/;  
               /Colubridae/                        -

**/Mammalia/**

-                        ,                        ,                        ,                        ,  
               ,                        ,                        ,                        ,



4.  $(\dots)$

- ;
- ;
- ;

5.  $(\dots)$

6.  $(\dots)$

7.  $(\dots)$

8.  $(\dots)$

9.  $(\dots)$

10.

11.



V.

.4

" "